



masterworks in AR augmented reality

Coined by Dalí Museum founder A. Reynolds Morse, the term “Masterworks” refers to Salvador Dalí’s paintings exceeding five feet in height or width, painted over a year or longer—they are both monumental in scale and critical Dalí paintings.

To see these works through the lens of AR, use a reproduction of these paintings in your classroom or online. Scan the QR code, point your device at the reproduction (or original work, if you’re in the Museum) and watch as Dalí’s art comes alive.



The Ecumenical Council
c. 1960



Galacidalacidesoxiribunucleicacid
(Homage to Crick and Watson)
c. 1963



Gala Contemplating the Mediterranean Sea
which at Twenty Meters Becomes the Portrait
of Abraham Lincoln-Homage to Rothko
(Second Version)
c. 1976



Nature Morte Vivante
c. 1956

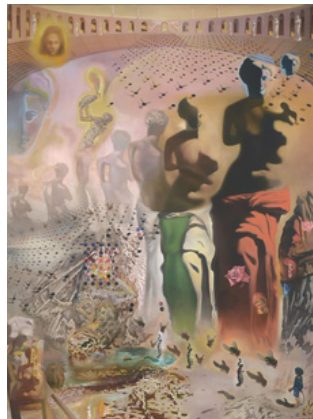




Portrait of My Dead Brother
c. 1963



The Discovery of America by Christopher Columbus
c. 1958-59



The Hallucinogenic Toreador
c. 1969-70



Velázquez Painting the Infanta Marguerita with the Lights and Shadows of His Own Glory
c. 1958

