

# The Dalí Museum Student Surrealist Art Exhibit “Obsession, Disintegration and Reinvention”

Hillsborough County  
March 8 – April 27, 2025

Initiated in 1985, this annual juried art exhibition presents work by Hillsborough middle and high school students that explores ideas and visions similar to those of Salvador Dalí and the surrealists. This year’s theme is “Obsession, Disintegration and Reinvention.”

Salvador Dalí underwent key transformative stages throughout his life, encompassing periods of obsession, disintegration and reinvention, all reflected in his artistic style, techniques and self-expression. With these broad themes, The Dali Museum invites students to explore one or more of these concepts in their own artwork.

Dalí was renowned for his obsessions, ranging from his Catalan landscapes to Millet's painting *The Angelus* to his wife, Gala. These obsessions pervade his art and writings, with some persisting throughout his life. Dalí’s obsessions fueled his creative genius. Obsession invites students to reflect on and visually explore their key fixations.

Following the dropping of the atomic bomb, Dalí became fascinated with the concept of disintegration. Disintegration implies the fragmentation of a subject, which Dalí represented visually through dissolution and pixelation. *The Disintegration of the Persistence of Memory* (1954) is a reinterpretation of his celebrated 1931 work *The Persistence of Memory*. He literally shatters his original composition, indicating how the world had changed. Disintegration challenges students to explore how an object or concept can be decomposed visually.

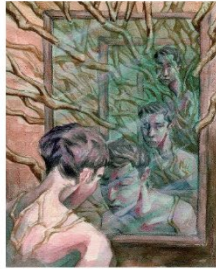
Reinvention is at the core of Dalí’s persona and art. Fleeing Europe during World War II, Dalí reinvented himself to appeal to the American public. Turning his back on modern art, he drew inspiration from the Renaissance and Catholicism, and he rebranded himself through his iconic symbols like his mustache and melting clocks. Reinvention invites students to reflect on how change can be expressed visually, whether relating to their personal identity or the essence of their subject.

The Student Surrealist Art Exhibitions, Competition and Receptions are funded by a generous gift from an anonymous donor and in part from a program endowment fund established by the Craig and Jan Sher Philanthropic Fund. Additional support for this educational program comes from our Museum corporate partner Bloomin’ Brands.

## Examples of winning art from 2024 SSAE exhibits



Joanna Schechter  
*I'm All Ears*



Marcus Rideout  
*Recede, Further Dream*



Jalyn Cronkrite  
*Feeling Feisty*



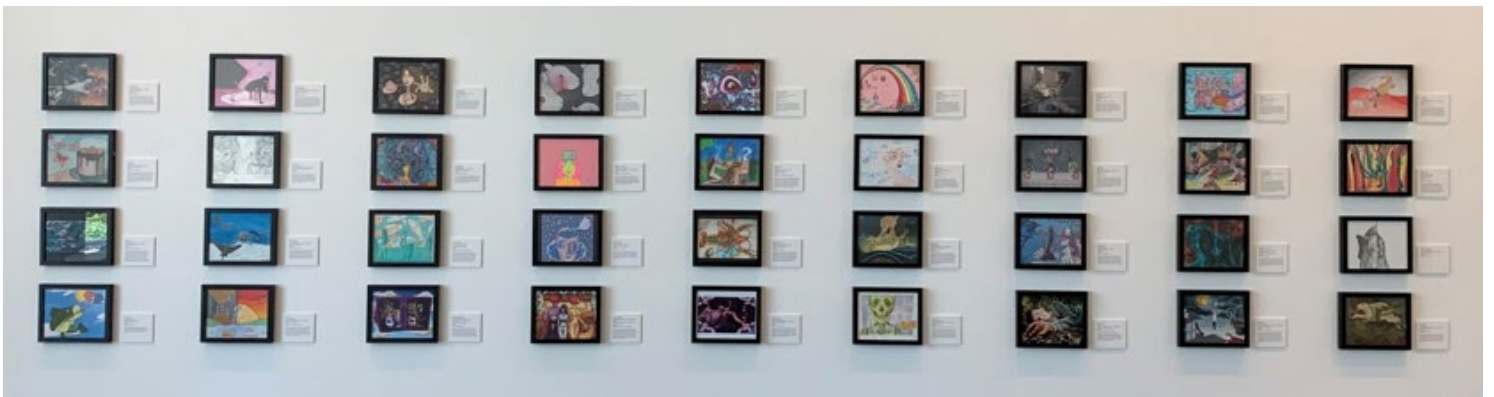
Daniella Costa  
*Across the Universe*



Brooke Taken  
*My Precious*



Sarah Brunner  
*Manifestation of Creation*



Artwork must be exactly 8x10 because of the grid layout and frame sizes  
\*Note the piece in the center that is not 8x10, showing white on top and bottom; artwork that is not exactly 8x10 will be disqualified upon receipt

## Artist Statements

To encourage students to reflect upon their creative processes and to articulate their artistic decisions, we ask students to consider the questions below as they reflect upon their artwork. Students should limit their responses to 50-75 words addressing some of the following:

- What inspired you?
- How did you respond to the exhibit's theme?
- How did you respond to Salvador Dalí's work?
- What element/s of your work connect with obsession, disintegration and or reinvention?
- What Surrealist techniques did you use?

### Details:

- Artist statements are not required for the initial jurying process, but if the artwork is selected, **the statement must be submitted using the online form emailed to all teachers of students with accepted work.**
- Artist statements are **due by Sunday, February 23.**
- Artist statements which explain inspiration and technique may be considered in the awards judging process, but scoring remains based on the merit of the artwork in accordance with the scoring rubric.
- Artist statements may not exceed 100 words.
- Artist statements will be printed **exactly as they are typed.**
- Students are encouraged to input their text at [Grammarly.com](https://www.grammarly.com), a free proof-reading resource, to ensure their writing is free of spelling and grammar errors.

*Please advise students that artist statements will appear on display to the public alongside their artwork – please do not include private information*

## Resources

The Dalí Museum created three videos to support students and teachers as they prepare for the Student Surrealist Art Exhibit.

### *Surrealism: The Big Ideas*

11-minute introduction to Surrealism. The video reviews the history and goals of the movement, and explains Dalí's relationship to the broader group. Consider it Surrealism 101.

### *How to Make Surrealist Art*

9-minute film featuring nine exhibit-winning Pinellas art teachers who provide inspiration and ideas for students to create their own surrealist art. The video introduces surrealist techniques including dislocation, transformation and symbolism, and presents prompts to try in the classroom.

### *Why Teach Surrealist Art?*

6-minute film featuring exhibit-winning Pinellas teachers who explain to their teacher colleagues why the Student Surrealist Art Exhibit is an essential part of their curriculum.

These videos as well as online galleries of previous Student Surrealist Art Exhibits can be found at [TheDali.org/ssae](http://TheDali.org/ssae).

## Hillsborough County Exhibit Dates (March 8 – April 27, 2025)

Fr. Feb. 7	Digital submissions due to Hillsborough County Schools Art Office
Fr. Feb. 14	Dalí final selection of artwork for display
Mo. Feb. 17	Art Office notify art teachers of accepted artwork
Fr. Feb. 21	Selected artworks due to the Hillsborough County Public Schools Art Office, 901 East Kennedy Boulevard, Tampa, FL 33602 <b>(all artwork MUST be exactly 8"x10")</b> Entry Form and Student Permission Form must be taped/mounted/matted on back of artwork
Su. Feb. 23	<b>Student artist statements (50-75 words) and label information must be submitted using form emailed to all teachers with accepted work</b>
Mo. Feb. 24	Artwork picked up at Hillsborough County Schools Art Office by Dalí
Sa. Mar. 8	SSAE Exhibit opens
We. Mar. 12	Awards judging & teacher notification
We. Mar. 26	Reception at The Dalí, 6:30-8:30 PM
Su. April 27	Last day of exhibit
First week of May	Artwork returned to the Hillsborough County Schools Art Office

## Entry Requirements

- Up to **6 entries per teacher** & one work per student. If two teachers submit the same student, only one will be chosen for consideration.
- Finished **work must be 8"x10"** to fit frames and cannot be thicker than ½." If work does not fit into frame, the work **will be disqualified**.
- While we cannot accept **3D objects** nor clay reliefs due to fragility, photographs of 3-D pieces are encouraged. They will be judged on the merit of the photograph first and on the merit of the object second (see photo of a winning 3D object page 2).
- **Artwork must be original** - no digital reproductions (unless documenting a 3D piece). Digital reproductions of oil paintings or drawings will not be accepted.
- Any work found to be **plagiarized** will be disqualified and removed from the exhibition.
- **AI-generated images are not allowed** (e.g., DALL-E, Midjourney) for this exhibition due to possible ethical issues with copyright, plagiarism, or fair use; however, students may use AI-powered tools within an art teacher-approved application (e.g., Adobe Photoshop, Procreate) to assist during the ideation and editing process of creating original digital art, photography, mixed-media work, etc. If AI-powered tools are used, the application(s) must be listed using the online artist statement form.  
\*\*\*Check your students' sources and observe their work processes.\*\*\*

## Exhibit Details

- Exhibit website: [TheDali.org/ssae](https://TheDali.org/ssae)
- Open to all middle and high school students in Hillsborough County, Florida
- Teachers must submit student artwork; **students may not submit their own artwork**
- 117 works will be selected for exhibit (based on wall space)
- The Dalí Museum **will frame selected work in 8x10" frames**

- PLEASE NOTE: The exhibit is held in The Dalí Museum Raymond James Community Room and is always free to visit. Please call before visiting the student exhibit as the Community Room occasionally closes for private events.

### Suggested Surreal Techniques to Consider:

Juxtaposition	Metamorphosis	Collage
Displacement	Dreamlike settings	Levitation
Double images	Dislocation	Transparency
Transformation	Symbolism	Scale distortion

### Accepted Artwork Checklist:

- ✓ Exactly 8x10"
- ✓ Entry form attached (page 9)
- ✓ Signed permission form attached (page 10)
- ✓ Artist statements submitted online (online form)

### Judication Guidelines:

- **Theme:** Artwork appropriately addresses the exhibition themes
- **Originality:** Artwork exhibits an original approach to process, concept and subject matter
- **Expression:** Artwork communicates an aesthetic vision or style and visual expression of critical thinking
- **Skill/Technique:** Artwork exhibits technical competency
- **Completeness:** Artwork exhibits thoughtful use of space and equal treatment to all elements of artwork

## Judication Scoring Rubric

Level 4	<ul style="list-style-type: none"> <li>• Shows strong evidence of integration between the <b>theme</b> and the visual work.</li> <li>• Shows strong use of <b>innovation and creativity</b>.</li> <li>• Communicates a strong <b>personal and/or original message</b>.</li> <li>• Shows strong application of the <b>design principles</b> and excellent <b>technical</b> use of media to express ideas.</li> <li>• Shows strong <b>use of space and is fully finished</b>.</li> </ul>
Level 3	<ul style="list-style-type: none"> <li>• Shows good evidence of integration between the theme and the visual work.</li> <li>• Shows good use of innovation and creativity.</li> <li>• Communicates a good personal and/or original message.</li> <li>• Shows good application of the design principles and good technical use of media to express ideas.</li> <li>• Shows good use of space and/or is predominantly finished</li> </ul>
Level 2	<ul style="list-style-type: none"> <li>• Shows little evidence of integration between the theme and the visual work.</li> <li>• Shows little use of innovation or creativity.</li> <li>• Communicates limited personal vision or original message.</li> <li>• Shows limited and/or inconsistent application of the design principles.</li> <li>• Novice in use of space and/or is partially unfinished</li> </ul>
Level 1	<ul style="list-style-type: none"> <li>• Shows no evidence of integration between the theme and the visual work.</li> <li>• Shows trite and/or simplistic approaches.</li> <li>• Communicates no personal or original message, and/or is direct copy of copyrighted photographic resources.</li> <li>• Shows no understanding of the design principles and/or very little or no technical competence or control of media.</li> <li>• Shows poor use of space and/or elements appear to be rushed or unfinished</li> </ul>

The Dalí Museum Education Department thanks you for your participation.

Dr. Kim Macuare, Director of Programming, [kmacuare@thedali.org](mailto:kmacuare@thedali.org)

Sumaya Ayad, School Programs Manager, [sayad@thedali.org](mailto:sayad@thedali.org)

Joy Garrett-Douglas, Education & Community Programming Associate, [jgarrett@thedali.org](mailto:jgarrett@thedali.org)



Entry Form (required)

ACCEPTED ENTRY FORM: STUDENT SURREALIST ART EXHIBIT  
On this sheet, indicate the orientation of the work by drawing arrows pointing to the top of the work or with a description such as “the clouds go on the bottom”  
*Attach to back of artwork*

Student Name	
Title of Work	
Teacher Name (First & Last)	
Teacher Email	

## Student Artwork Permission Form (required)

Dear Parent/Guardian,

Your child's artwork has been selected to be exhibited at [The Dalí Museum in the Pinellas County Student Surrealist Art Exhibit](#). This annual art exhibit presents work by middle and high school students whom we invite to explore ideas similar to those explored by Salvador Dalí and the surrealists. Your child's artwork will be exhibited in The Dalí Museum's Raymond James Community Room from [March 8 - April 27, 2025](#). There will be a reception on [Wednesday, March 26](#). An invitation will be provided by the art teacher. If you plan to visit at a different time, we recommend calling beforehand to confirm that the gallery is open (it is used for limited private events).

Please read and sign the release form below and [attach it to the back of the student's artwork](#).

Sincerely,  
*The Dalí Museum Education Team*

-----

The student and parent/guardian give their permission to The Dalí Museum for uses and displays of the student's artwork and artist statement to include, without limitation, display and exhibition on the Internet, on television, in publications, and at Museum events. Permission is also given to the Museum to reproduce the artwork and artist statement for use in Museum publications including, without limitation, brochures, pamphlets, and flyers. The Museum shall not be liable for any third-party reproduction or redistribution of artwork so used, displayed, or reproduced by the Museum pursuant to this permission. While care will be taken to ensure that all artwork will be handled in such manner that no damage or loss is incurred, the Museum shall not be held responsible for any damage or loss that might occur.

Title/description of artwork: \_\_\_\_\_

Art teacher name: \_\_\_\_\_

School: \_\_\_\_\_

Print name of student artist:

Print name of parent/guardian:

\_\_\_\_\_  
Signature of student artist:

\_\_\_\_\_  
Signature of parent/guardian:

\_\_\_\_\_  
Date: