

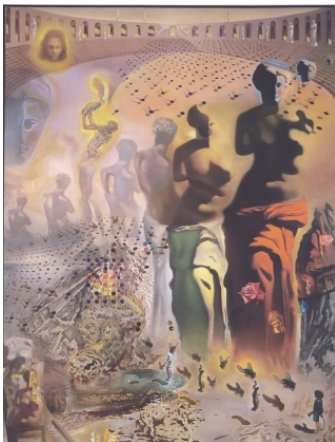
paper bugs

Materials needed:

Construction paper in assorted colors, crayons, markers, popsicle stick or clothespin, pipe cleaners, glue stick, scissors, wiggly eyes

How to do it:

1. Imagine the kind of bug you'd like to create.
2. Using assorted paper colors, cut out the body parts of your bug, such as legs, torso, wings, & antennas. Use the template below or create your own.
3. Draw details onto using markers or crayons.
4. Glue the parts onto the popsicle stick (or clothespin).
5. You can fold the legs to help your bug stand up or use pipe cleaners.
6. Add wiggly eyes to your bug's head for the finishing touch.



How this art relates to Dalí:

Dalí frequently used symbols in his work. A symbol is a representation of something—an idea, object or concept. Dalí likes to use symbols when he needs to explain concepts or ideas visually. For example, grasshoppers represented *fear* to Dalí, while *eggs* represented hope and love. Below is the painting *The Hallucinogenic Toreador* in which Salvador Dalí uses many symbols, like flies and roses.

